

MERRYFAIR®



DOMINO

Seating Products

Seating Excellence at Work

The Domino lounge system is based on a Corner module and a Linear module. By simply using these two modules, one can configure an infinite variety of layouts, from basic row seating to unique creative designs.



Appearance

This sharp looking system is perfect for semi-casual waiting, breakout or entertainment applications.

Comfort

Corner module has two right-angled backrests, that double as an armrest on one side. Generous armrest width allows impromptu support for computer notebooks, drinks and friends!

Flexibility

Each module is securely connected to its neighbour using an integrated linking bracket which can be refastened by an Allen key. You can easily reconfigure the seating layout on site with just one tool.



As individual furniture, Domino's flared form gives it a sculptural presence in any surrounding.

Upholstery

Upholstery of textile fabric, leather or PU/PVC covering over polyurethane foam

Linking Bracket

Linking bracket of steel finished in black powder coating.

Structure

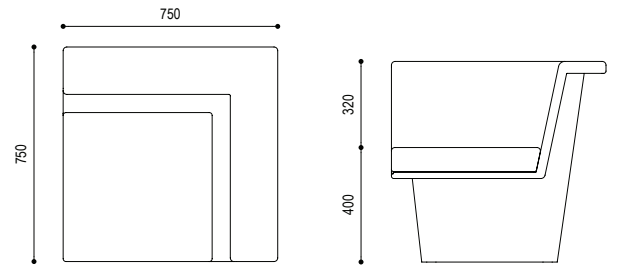
Structure is a two-piece shell of injection-moulded polypropylene in black color. Shell surface is adorned with patterns inspired by wood grain or tree rings.

Base

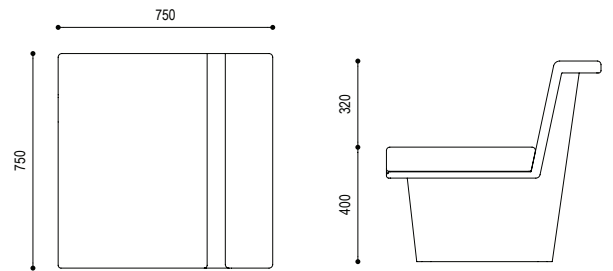
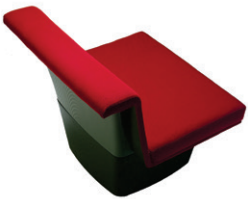
Base Feet of injection-moulded black polypropylene are adjustable for height to compensate uneven floor.



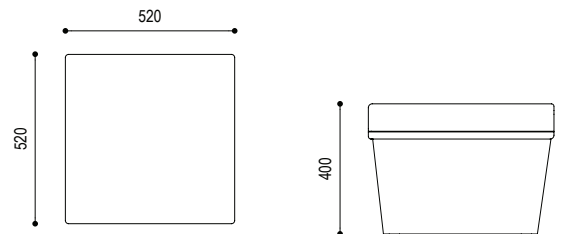
Corner Module
425 NA A00 AY



Linear Module
426 NA A00 AY



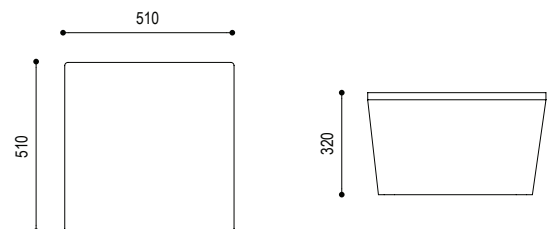
Pouf
424 NA A00 AY



Coffee Table
421 NA A00 AY
wood top



422 NA A00 AY
black glass top



Domino: Accessory Side Table



Black Laminate Top
(TS10)

Coffee Table

Coffee Table has an attractive yet durable glass top, framed by a protective steel rim, on a matching black PP base. Glass top provide an easy-to-clean surface. Coffee tables can be arrayed together to increase table space.

Poufs

Poufs do not connect to Domino modules, but can be used either individually or arranged together to create a larger array of seats.

Side Table

Side table, without a base, securely bridges two side-by-side modules via steel brackets.

HEAD OFFICE & FACTORY

Merryfair Chair System Sdn Bhd
(Co. No. 86276-A)
No.2, Jalan Koporat 1/KU9,
Taman Perindustrian Meru,
42200 Klang, Selangor D.E., Malaysia.

International Sales & Marketing
Tel. +603 3393 2888
Fax. +603 3393 2000
enquiry@merryfair.com

Domestic Sales & Marketing
Tel. +603 3393 6868
Fax. +603 3393 6888
domestic@merryfair.com

www.merryfair.com

SHOWROOM OFFICE

Merryfair Marketing Sdn Bhd
(Co. No. 665054-V)
No. 82-84, Jalan 2/23A,
Jalan Genting Kelang,
53300 Kuala Lumpur, Malaysia.
Tel. +603 4149 8899
Fax. +603 4143 0113

REGIONAL OFFICE & SHOWROOM

美力菲 (中国) 家具有限公司
广东省佛山市顺德区容桂华口顺德高新区(容桂)华天路21号
邮编: 528306
Merryfair (China) Co.,Ltd
No. 21, Huatian Road, Shunde High Tech Industrial Zone
(Ronggui), Huakou Community, Ronggui Subdistrict,
Shunde District, Foshan City, Guangdong, China 528306.
Tel. +86 757 2636 9861
Fax. +86 757 2881 9700
domestic@merryfair.com.cn

Merryfair (Singapore) Pte Ltd
33 Ubi Avenue 3, #01-52/53 Vertex,
Singapore 408868.
Tel. +65 6284 9098
Fax. +65 6284 9028
enquiry@merryfair.com.sg

Merryfair (Thailand) Co.,Ltd.
19/1-2 Sithakarn, Soi Chidlom
Lumpini, Pathumwan
Bangkok 10330 Thailand
Tel : +66 2254 1588
Fax : +66 2254 1585
sales@merryfair.co.th

